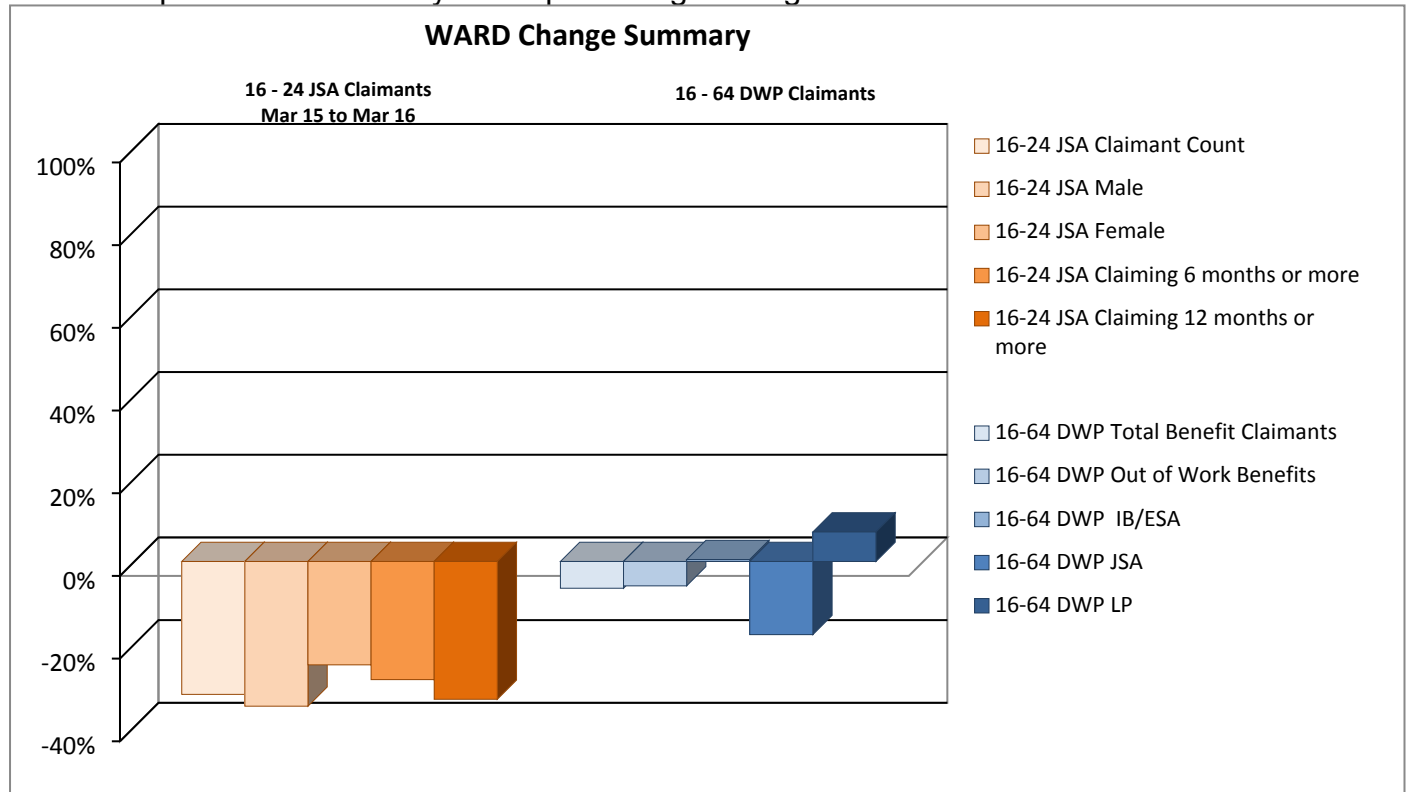


# Employment and Skills April 2015 – March 2016

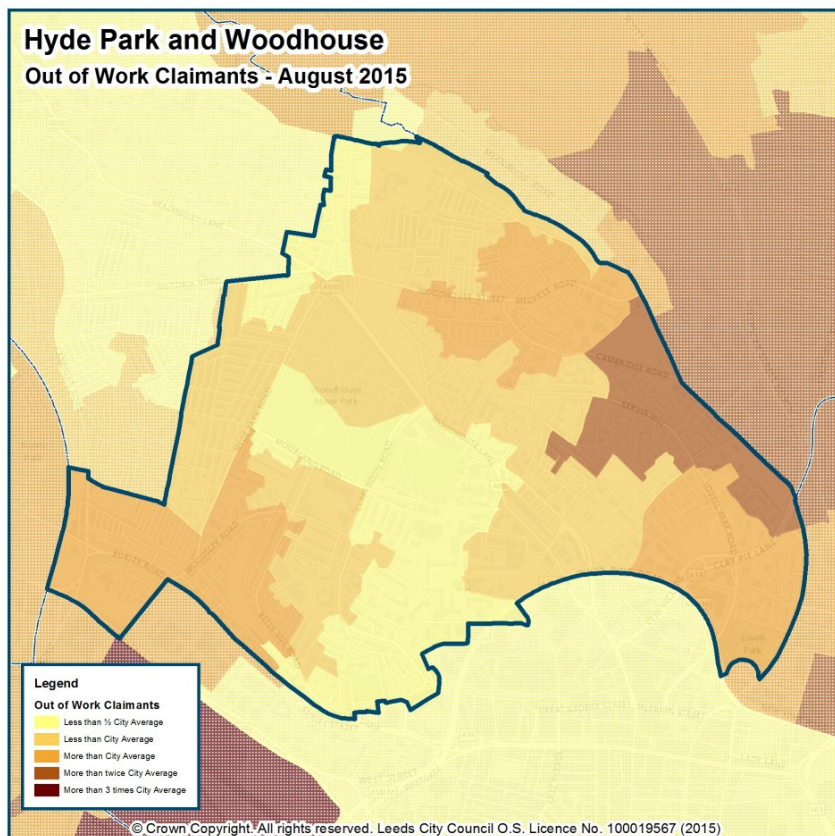
## Hyde Park and Woodhouse Ward

### Summary Information

This chart provides a summary of the percentage changes.

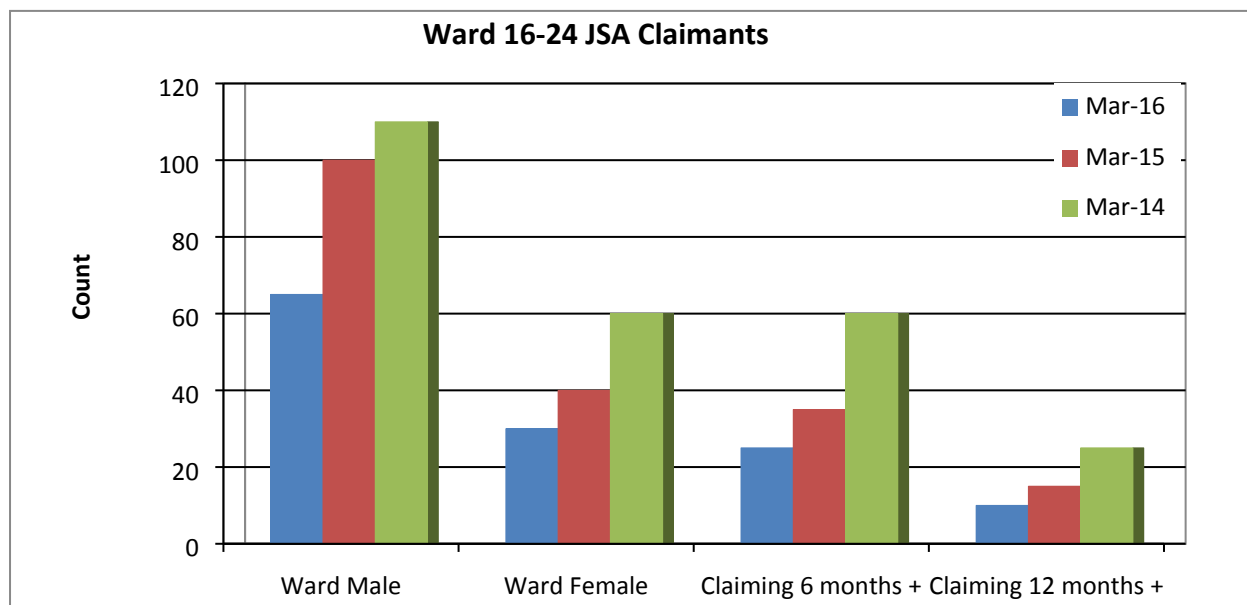


### Out of Work Benefits Map



## 16-24 JSA Claimants

16-24 Age Group JSA Claimants				2015-16 Change	
Source: Nomis	Mar 2016	Mar 2015	Mar 2014	Count	% or pp
Ward Count	95	140	170	-45	-32.14%
Leeds Count	2,320	3,640	5,215	-1,320	-36.26%
Ward % of WAP	0.41%	0.61%	0.74%	-0.20	
Leeds % of WAP	0.46%	0.72%	1.03%	-0.26	
Ward Male	65	100	110	-35	-35.00%
Ward Female	30	40	60	-10	-25.00%
Claiming 6months +	25	35	60	-10	-28.57%
Claiming 12months +	10	15	25	-5	-33.33%



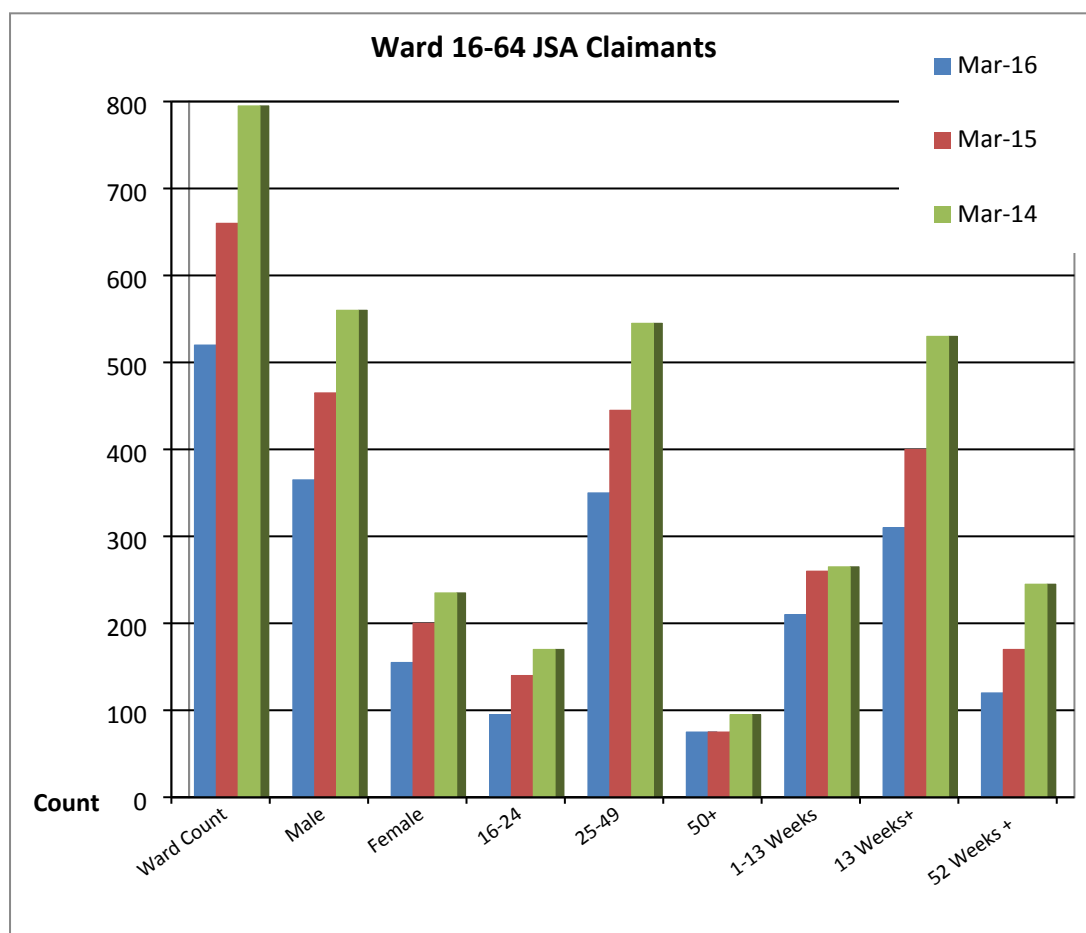
## 16-24 DWP Benefit Claimants

Under 25s DWP Benefit Claimants					
Source: Nomis	Aug 2015	Aug 2014	Aug 2013	2014-15 Change	
Ward DWP 16-24 Benefit Claimants	295	350	410	-55	-15.71%
% of Ward WAP	1.28%	1.52%	1.78%	-0.24	
Leeds DWP 16-24 Benefit Claimants	9,120	10,555	12,660	-1,435	-13.60%
% of Leeds WAP	1.81%	2.09%	2.51%	-0.28	

## 16-64 JSA Claimants

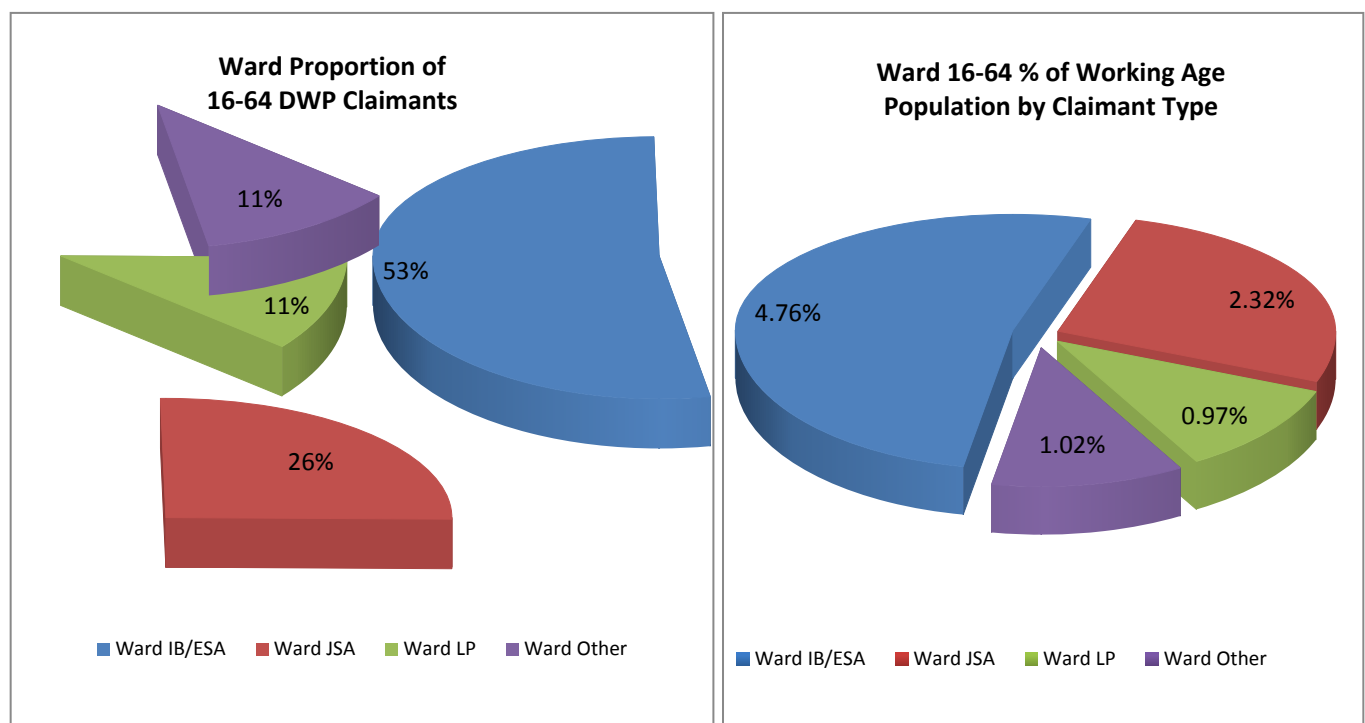
16-64 Age Group JSA Claimants				2015-16 Change	
Source: Nomis	Mar 2016	Mar 2015	Mar 2014	Count	% or pp
Ward Count	520	660	795	-140	-21.21%
% of Ward WAP	2.25%	2.86%	3.44%	-0.61	
Leeds Count	11,355	14,725	19,975	-3,370	-22.89%
% of Leeds WAP	2.25%	2.91%	3.96%	-0.66	
Male	365	465	560	-100	-21.51%
Female	155	200	235	-45	-22.50%
16-24	95	140	170	-45	-32.14%
25-49	350	445	545	-95	-21.35%
50+	75	75	95	0	0.00%
1-13 Weeks	210	260	265	-50	-19.23%
13 Weeks+	310	400	530	-90	-22.50%
52 Weeks+	120	170	245	-50	-29.41%

Note: data is rounded up/down to the nearest 5 per LSOA.



## 16-64 DWP Benefit Claimants

16-64 Age Group DWP Working Age Client Group Benefits					
Source: Nomis	Aug 2015	Aug 2014	Aug 2013	2014-15 Change	
Ward Out of Work Benefits	1,915	2,035	2,185	-120	-5.90%
Leeds Out of Work Benefits	52,840	56,185	61,165	-3,345	-5.95%
% of Leeds WAP	10.46%	11.13%	12.11%	-0.67	
Ward IB / ESA	1,100	1,095	1,010	5	0.46%
Leeds IB / ESA	32,620	31,585	29,995	1,035	3.28%
% of Leeds WAP	6.46%	6.26%	5.94%	0.20	
Ward JSA	535	650	870	-115	-17.69%
Leeds JSA	12,120	15,935	21,955	-3,815	-23.94%
% of Leeds WAP	2.40%	3.16%	4.35%	-0.76	
Ward LP	225	210	220	15	7.14%
Leeds LP	6,620	6,850	7,075	-230	-3.36%
% of Leeds WAP	1.31%	1.36%	1.40%	-0.05	

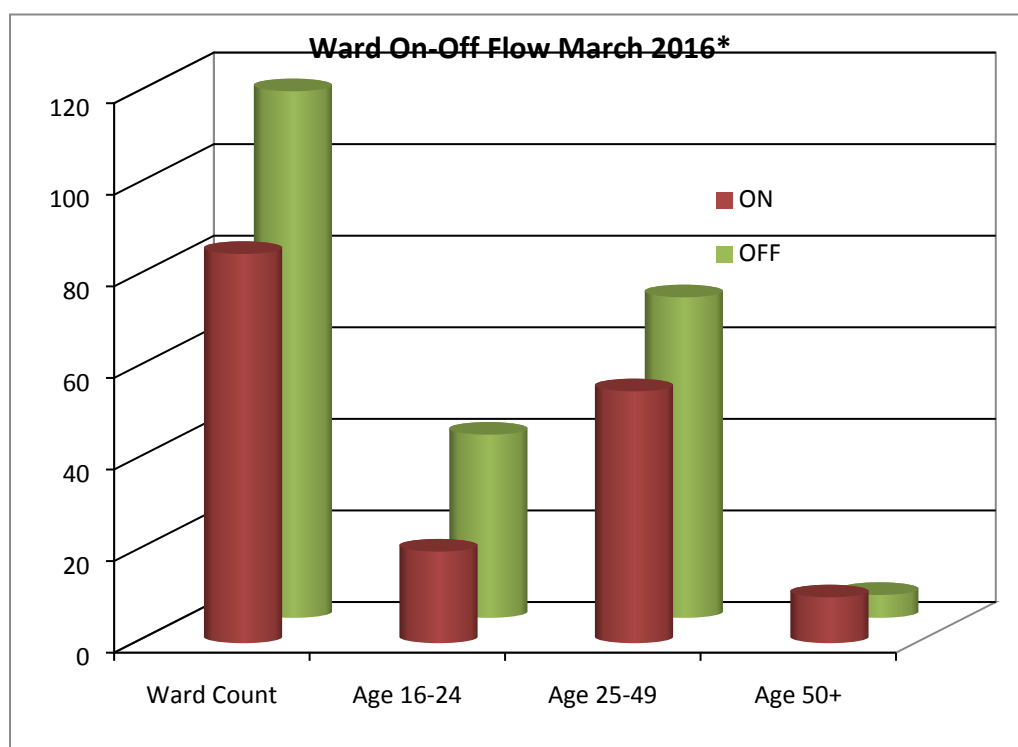


'Other' Benefits – includes other Income Support and Pension Credits

## On / Off Claimant Flow

16-64 On Flow				2015-16 Change	
source: Nomis	Mar 2016	Mar 2015	Mar 2014	Count	% or pp
Ward	85	100	110	-15	-15.00%
Leeds	1,990	2,870	3,060	-880	-30.66%
Ward % WAP	0.37%	0.43%	0.48%	-0.06	
Leeds %WAP	0.39%	0.57%	0.61%	-0.18	
16-24	20	35	30	-15	-42.86%
25-49	55	65	65	-10	-15.38%
50+	10	5	5	5	100.00%

16-64 Off Flow				2015-16 Change	
source: Nomis	Mar 2016	Mar 2015	Mar 2014	Count	% or pp
Ward	115	310	120	-195	-62.90%
Leeds	2,475	3,380	3,730	-905	-26.78%
Ward % WAP	0.50%	1.34%	0.52%	-0.84	
Leeds %WAP	0.49%	0.67%	0.74%	-0.18	
16-24	40	40	25	0	0.00%
25-49	70	80	85	-10	-12.50%
50+	5	10	0	-5	-50.00%
Over 6 months	15	35	25	-20	-57.14%
Over 12 months	5	20	15	-15	-75.00%



\*A monthly count of claimants who either a) claiming Jobseeker's Allowance on the count date, b) ended a claim during the previous accounting month or c) started a new claim during the previous accounting month.

## GCSE / Skills

GCSE / Skills Key Stage 4 Attainment							Source: DfE / EPAS
	5+ GCSEs A*- C						
	2015		2014		2013		2014-15 Change
	No of Pupils	Rate %	No of Pupils	Rate %	No of Pupils	Rate %	% or pp
Ward	42	46.7	24	30.8	86	84.1	15.9
Leeds	4,953	63.1	4,666	61.0	6,308	85.7	2.1
	5+ GCSEs A*- C including English and Maths						
	2015		2014		2013		2014-15 Change
	No of Pupils	Rate %	No of Pupils	Rate %	No of Pupils	Rate %	% or pp
Ward	36	40	20	25.6	37	36.8	14.4
Leeds	4,357	55.5	3,910	51.0	4,126	56.0	4.5

**Note:** In 2014 there were multiple methodological changes. The Wolf review restricted the qualifications counted and prevented any one qualification from counting larger than one GCSE. The review also capped the number of GCSEs included in performance measures to just two per pupil.

The early entry policy meant that for exams in English Baccalaureate (English, maths, science, a language and a humanities subject) set after 29 September 2013, the results from a pupil's first attempt at the exam was counted, rather than their best. In 2015 early entry policy has been extended to all subjects, therefore 2014/15 data cannot be compared or RAG rated.

## NEET

16 - 18 Years				2015-16 Change	
Source: LCC Childrens Services	Jan 2016	Jan 2015	Jan 2014	Count	% / pp
Ward Adjusted NEET	29	33	40	-4	-12.12%
Ward Adjusted NEET Rate (%)	9.6	10.3	12.2	-0.7	
Leeds Adjusted NEET	1,402	1,491	1,559	-89	-5.97%
Leeds Rate (%)	6.3	6.6	6.9	-0.3	

